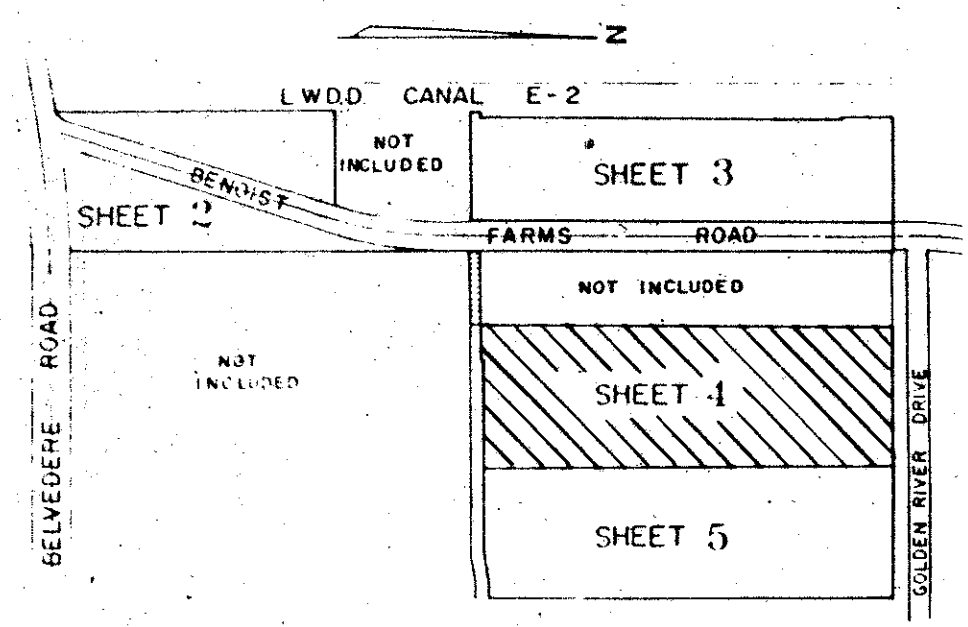


SUMMER CREEK

BEING A PORTION OF GOLDEN LAKES VILLAGE, P.U.D.
 IN SECTIONS 29 & 32, TOWNSHIP 43 SOUTH, RANGE 42 EAST
 BEING A REPLAT OF PORTIONS OF TRACTS 9,10,11 & 18 BLOCK 3,
 PALM BEACH FARMS COMPANY PLAT No.3 (PLAT BOOK 2, PAGES 45-54)
 PALM BEACH COUNTY, FLORIDA.

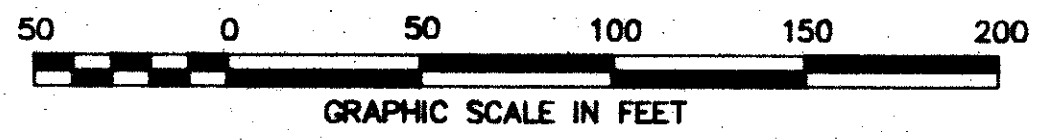
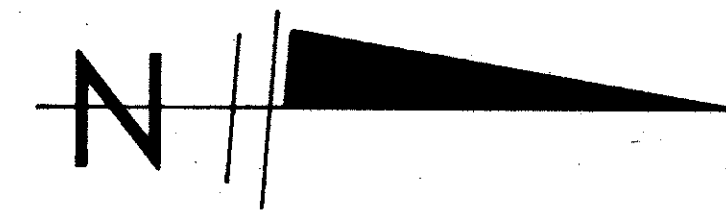
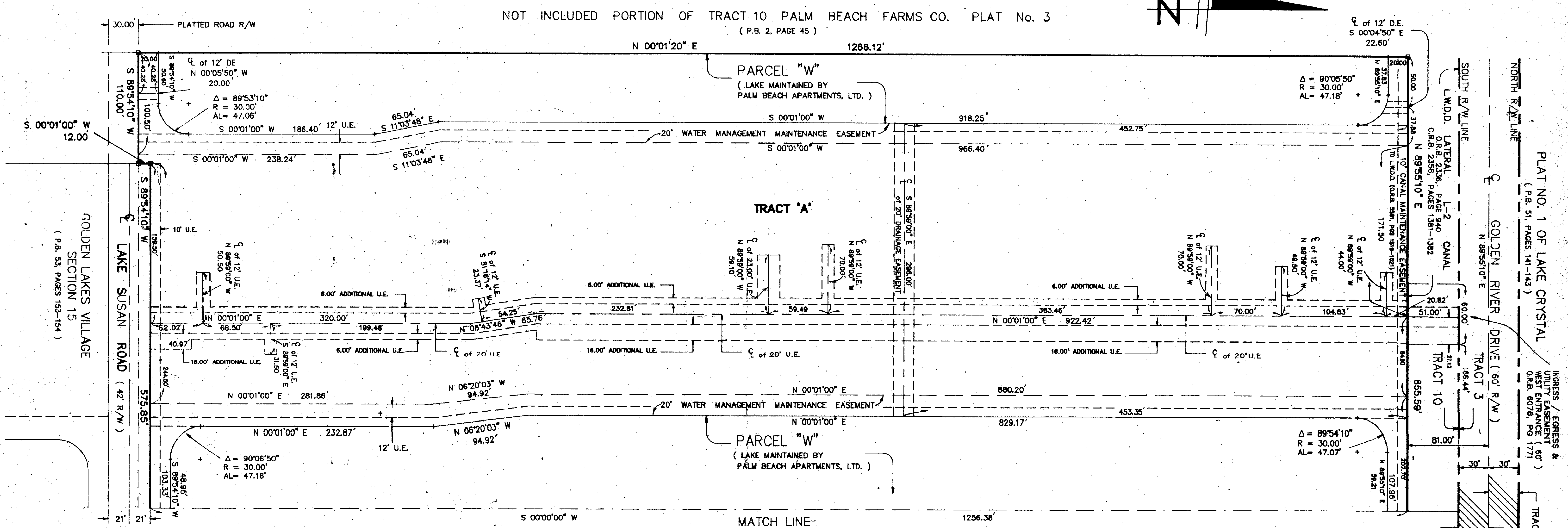
SHEET 4 OF 5

JUNE, 1989



KEY MAP
 SECTIONS 29 & 32; TWP 43 S; RGE. 42 E

COUNTY OF PALM BEACH
 STATE OF FLORIDA
 This Plat was filed for record on
 this _____ day of _____
 1989 and is recorded in Plat Book No. _____
 of page _____
 JOHN R. DUNKLE, Clerk of Court



SUBDIVISION - SUMMER CREEK
 BOOK 64 PAGE 163 FLOOD MAP # 1504
 FLOOD ZONE AN (T) ZONING RS
 QUAD # 46
 SEE 85-89
 PUD NAME GOLDEN LAKES VILLAGE, P.U.D.

81821

SHEET No.5

SHEET No.5

64/163

0251-002

Pt. 85-89
RS PUD

Field Book No. Pg.	ROBERT E. WEN & ASSOCIATES, INC.	Job No.	89-1027
Design	ENGINEERS - PLANNERS - SURVEYORS	Scale	1" = 50'
Drawn	WEST PALM BEACH FLORIDA	Date	JUNE, 1989
Checked		Sheet	4
MITZELFELD		File No.	BF-2441

SUMMER CREEK